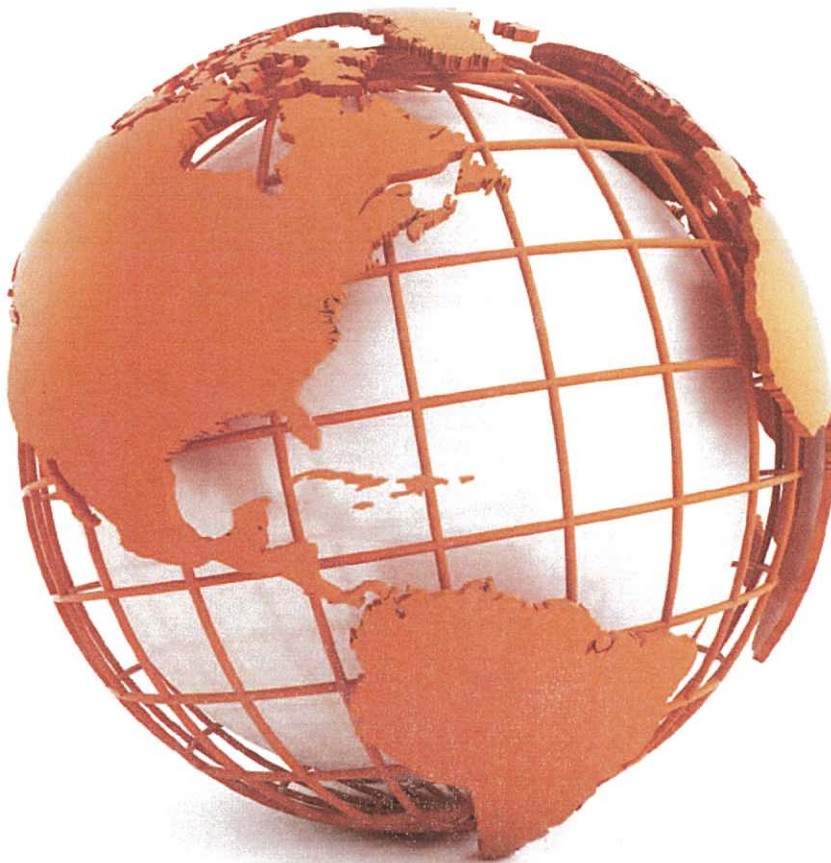


STAND OUT FROM THE CROWD



Master's Programmes

- Programme and Project Management
- International Technology Management

2013/14

Contents

The University of Warwick	3
WMG School for Professional Development	3
MSc in Programme and Project Management	4
MSc in International Technology Management	6
Flexible Programme Route	8
Learning and Teaching	9
Career Prospects	10
Campus Life	10
Scholarships and Financial Assistance	11
Admission	11



WARWICK

Information Seminar

www.vtc.edu.hk/wmg/registration.html

Contact

wmg enquiry@vtc.edu.hk

The University of Warwick, a Reputation for Quality

Established in 1965, the University of Warwick is one of the leading higher education institutions in the UK. It is a uniquely successful institution, with an acknowledged reputation for excellence in both research and teaching, for innovation and for links with business and industry.

WMG: a Unique Institution

It is a multi-disciplinary department at the University of Warwick and was established by Professor Lord Kumar Bhattacharyya in 1980. It offers unrivalled postgraduate education to over 1,500 students around the world each year.

- Research projects are dedicated to finding solution to real-world problems.
- Tutors are highly qualified with good experience in business or industry.

Queen's Anniversary Prize for WMG



Prof Lord Kumar Bhattacharyya
Founder and Head of WMG

The University of Warwick has won Royal recognition for the work of WMG with the award of a Queen's Anniversary Prize for Higher and Further Education.

This national honour is awarded every two years to institutions of higher and further education across the UK for work of outstanding excellence. It celebrates world-class achievement and captures the remarkable diversity and quality of the work going on in the universities and colleges of further education.

WMG School for Professional Development

Sharing the same vision of providing quality education and striving for excellence, WMG at the University of Warwick and the Vocational Training Council (VTC) have aligned themselves to provide a valued choice to those who wish to acquire values, knowledge and skills for enhancing their employability.

With the establishment of the WMG School for Professional Development in the VTC, students can receive high quality education in Hong Kong from a world-class university.

Vocational Training Council (VTC)

Established in 1982, the VTC is the largest vocational education, training and professional development group in Hong Kong. VTC provides valuable credentials for some 240,000 students each year through a full range of pre-employment and in-service programmes with internationally recognised qualifications.

VTC entered into collaboration with the University of Warwick, UK to launch the first master's programme in Hong Kong in 2009 with a view to grooming more high standard professionals for Hong Kong to drive the growth of industries.

Rankings

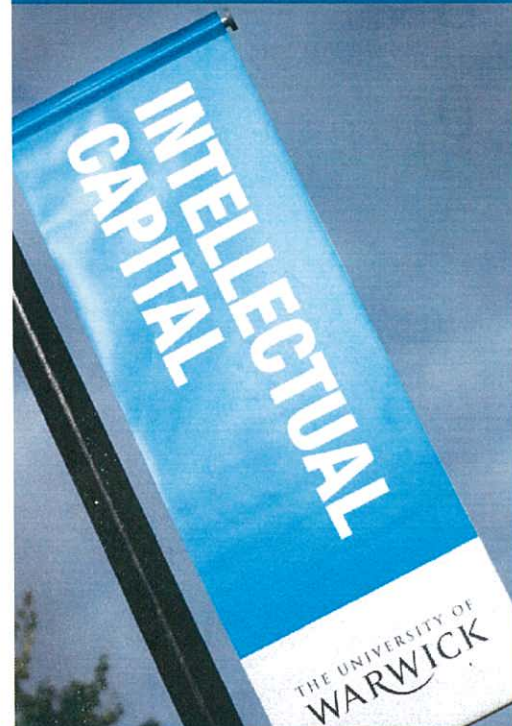
World No. **58**
QS World University Rankings, 2012

UK No. **5**
The Guardian, 2013

UK No. **6**
The Independent, 2013

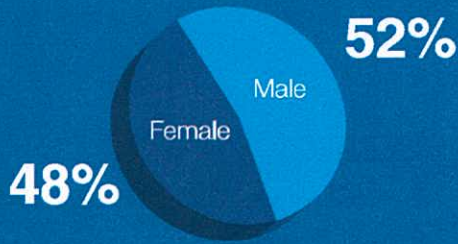
UK No. **8**
The Times Good University Guide, 2013

UK No. **10**
The Sunday Times, 2013



2012/13 Student Profile

Average age **31**



Academic background

- Accounting and Finance
- Arts
- Business and Management
- Design
- Engineering
- Hospitality
- Information Technology
- Law
- Marketing
- Real Estate
- Science
- Social Science
- Translation

First degree awarding countries



MSc in Programme and Project Management

Registration Number (Non-local Higher and Professional Education (Regulation) Ordinance): 251907

Overview

In recent years, increased emphasis on improving business performance has been achieved by optimising key business processes. This programme will provide students with the methodologies, tools, principles and philosophies of successful project management.

Students will be able to build up the concepts of strategic thinking and apply to project planning and control, financial and human behavioural operations as well as change management.

This programme is designed for students who wish to move into project management, either in the technical or business field, or into a new field of expertise. It is suitable for those with work experience as well as those with little or no background in business or industry.



Mode of Study

Full-time: 1 Year

Part-time: 2 - 3 Years

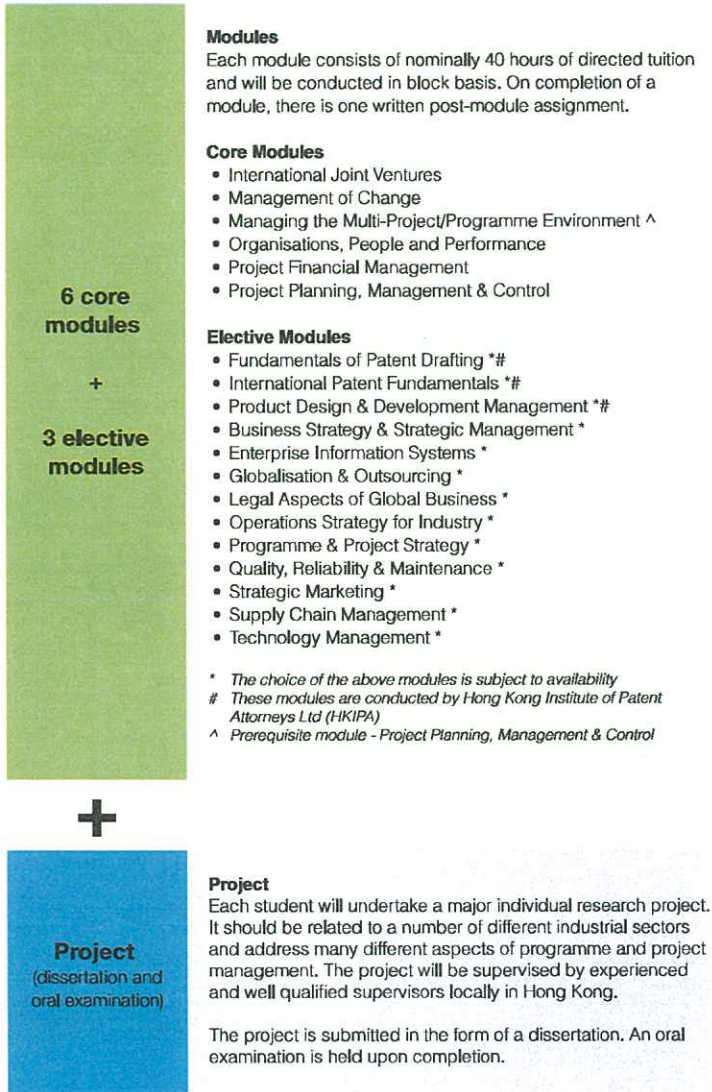
Classes will normally be held on weekday evenings and weekends.

	1st Year	2nd Year	3rd Year
Full-time (1 year)	9 Modules Project		
Part-time (2 years)		9 Modules Project	
Part-time (3 years)			9 Modules Project

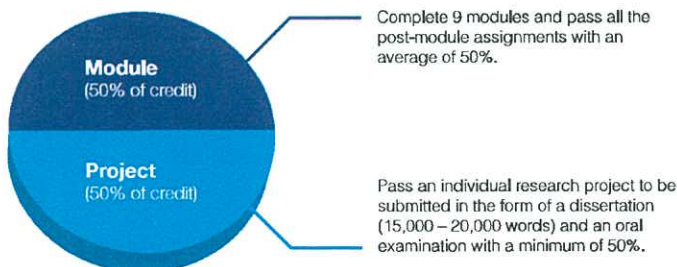
Student Sharing

Programme Structure

This programme covers 6 core modules and 3 elective modules, plus an individual research project.



Assessment



Award

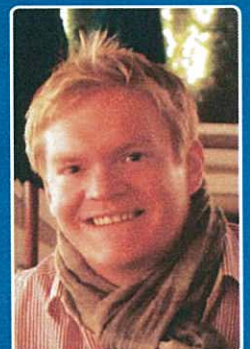
Upon satisfactory completion of the programme, an MSc in Programme and Project Management Degree will be awarded by the University of Warwick. It is identical to the degree awarded in the UK.

“This course is wonderful and a real surprise for me. The lessons are so different from my past study experience that it is highly interactive. The collaborative activities, case study and projects could successfully get the students fully involved in the lessons and equip them with the knowledge learnt by collective sharing and problem solving. The course is not just about learning things. It's about putting them into practice and seeing how they work in the real business world. The teachers from WMG are with good relevant industry experience which inspires me a lot both on my current job and for my career development.”



Kao Ching Man, Rita
Senior Marketing Officer,
Hunter Douglas Gallery Group

“The enthusiasm and experience of the lecturers gives a relevant and interesting background to the modules. The workshop exercises helped to put the Project Management Theory into a practical context.”



Stewart Macfarlane
BIM Project Manager,
IntelliBuild Technyx Asia Limited

Uniqueness of the Warwick MSc Programmes



- Warwick is a top 10 university in the UK.
- Study opportunity in the UK or other WMG partner universities such as Singapore, Malaysia, Thailand, India and Cyprus.
- Distinguished speaker series with guests from industry.
- Scholarships are available for outstanding graduates.
- Modules are taught by the UK or local academic professionals.
- Courses are applied with real, up-to-date industrial relevance.
- Innovative and proven teaching methods.
- No written examinations. Assessed by assignments and project.
- Enticing career prospects.
- Flexible class schedule and programme route.

MSc in International Technology Management

Registration Number (Non-local Higher and Professional Education (Regulation) Ordinance): 252137

Overview

With the fast changing technology, it is important to stay in pace with international technological developments and changes of business operations to enhance competitiveness. This programme provides students with the knowledge to manage the development, acquisition and operation of technology in a global competitive environment and contributes to the management of international operations and collaborative activities.

Students will be able to develop the skills to generate solutions through product and process development and continually improve international competitiveness. Also, students will be able to understand the impact of e-business technologies and develop skills to contribute to the strategic aspects of design management.

This programme is designed for those who wish to take a leading role in managing innovation and technological change in an international environment. It is suitable for those from a wider range of educational backgrounds and work experience.



Mode of Study

Full-time: 1 Year

Part-time: 2 – 3 Years

Classes will normally be held on weekday evenings and weekends.

	1st Year	2nd Year	3rd Year
Full-time (1 year)	9 Modules Project		
Part-time (2 years)		9 Modules Project	
Part-time (3 years)			9 Modules Project



Programme Structure

This programme covers 9 modules, plus an individual research project.

5 modules from list A

+

4 modules from list B and list C
(At least 1 module from list C)

Modules

Each module consists of nominally 40 hours of directed tuition and will be conducted in block basis. On completion of a module, there is one written post-module assignment.

List A – Value Creation: Development and Technology

- Enterprise Information Systems *
- Fundamentals of Patent Drafting *#
- Managing the Multi-Project/Programme Environment ^
- Operations Strategy for Industry *
- Product Design & Development Management *#
- Programme & Project Strategy *
- Project Planning, Management & Control
- Quality, Reliability & Maintenance *
- Supply Chain Management *
- Technology Management *

List B – Business Operations

- Business Strategy & Strategic Management *
- Globalisation & Outsourcing *
- Management of Change
- Organisations, People and Performance
- Project Financial Management
- Strategic Marketing *

List C – International Business

- International Joint Ventures
- International Patent Fundamentals *#
- Legal Aspects of Global Business *

* The choice of the above modules is subject to availability
These modules are conducted by Hong Kong Institute of Patent Attorneys Ltd (HKIPA)
^ Prerequisite module - Project Planning, Management & Control

+

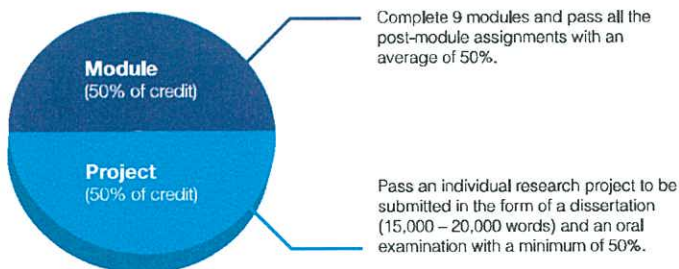
Project
(dissertation and oral examination)

Project

Each student will undertake a major individual research project. It should be related to a number of different industrial sectors and address many different aspects of international technology management. The project will be supervised by experienced and well qualified supervisors locally in Hong Kong.

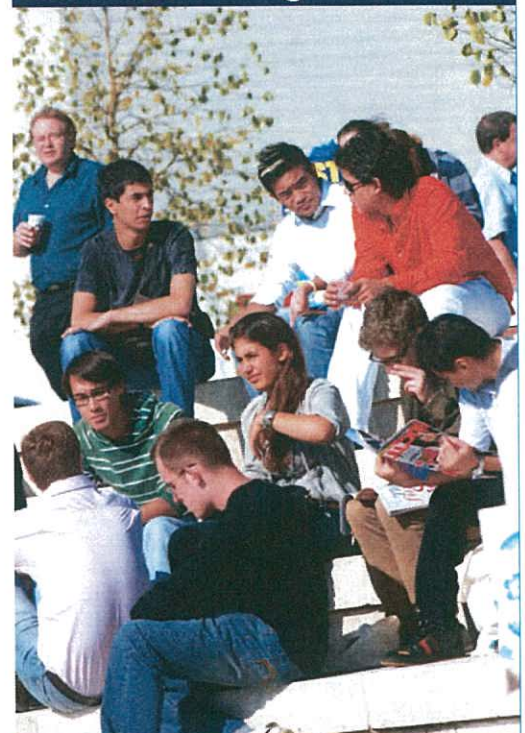
The project is submitted in the form of a dissertation. An oral examination is held upon completion.

Assessment



Award

Upon satisfactory completion of the programme, an MSc in International Technology Management Degree will be awarded by the University of Warwick. It is identical to the degree awarded in the UK.



“This programme provides me with the opportunity to know a lot of talented and friendly people from various backgrounds. The modules are well structured with both academic theories and practical case studies linking to real life situations. Together with the full support of the academic staff, I would recommend this programme to you with no reservation.”



Chu Kai Wing, Kevin
Business Analyst,
Merrill Lynch (Asia Pacific) Limited

Student Sharing

“This is a very good master course you should consider. Warwick provides practical knowledge to students with a very high academic standard in an interactive class. There is a synergy for sharing and networking among students which I enjoy the most.

I feel happy to have the same UK master course from a top UK university at Hong Kong.”



Lai Hing Fai, Dick
Change Delivery Manager,
HSBC

“Taking the MSc Programme was one of my rewarding & fulfilling experiences that have changed my life in many positive ways, such as more passion for growth, better career advancement, more positive change management and logical thinking.

To me, the knowledge I've learnt from it is both useful and practical, mostly applicable to both my business and personal life. All the teaching and office staff were very supportive throughout my studies.

All in all, I enjoyed the 2-year school life and highly recommend other students to enrol this programme.”



Wu Yan Ping, Veronique
Personal Assistant to
Asia-Pacific Regional Director,
Imperial Tobacco

Flexible Programme Route

Students may choose to achieve a postgraduate qualification first and then progress to a master's degree. Both Postgraduate Certificate (PgC) and Postgraduate Award (PgA) are accredited to the Master's degree.

Postgraduate Certificate (PgC) in Programme and Project Management (Registration no. 251924)

Part-time	: 1 – 1.5 Years
Programme Structure	: 6 modules*
Assessment	: Complete the 6 modules and pass all the post-module assignments with at least 40%.

* It requires taking 5 core plus 1 elective modules.

Postgraduate Award (PgA) in Programme and Project Management (Registration no. 251925)

Part-time	: 0.5 – 1 Year
Programme Structure	: 3 modules*
Assessment	: Complete the 3 modules and pass all the post-module assignments with at least 40%.

* It requires taking 3 core modules.

Postgraduate Certificate (PgC) in International Technology Management (Registration no. 252139)

Part-time	: 1 – 1.5 Years
Programme Structure	: 6 modules*
Assessment	: Complete the 6 modules and pass all the post-module assignments with at least 40%.

* It requires taking at least 2 modules from list A, at least 1 module from list B and at least 1 module from list C.

Postgraduate Award (PgA) in International Technology Management (Registration no. 252140)

Part-time	: 0.5 – 1 Year
Programme Structure	: 3 modules*
Assessment	: Complete the 3 modules and pass all the post-module assignments with at least 40%.

* It requires taking at least 1 module from list A and at least 1 module from list C.

(Note: To progress to the MSc, an average of at least 50% is required in the assignments)

Learning and Teaching

International Exposure

Global insight by means of lectures, interactive discussions and cultural experiences are invaluable for students.

These programmes provide students with the opportunity to attend modules in the UK or any other WMG overseas partner universities in Singapore, Malaysia, Thailand, India and Cyprus for up to 2 modules with no additional module fee.

Exchange students from WMG partner universities to Hong Kong also contribute to internationalising the school.

WMG overseas partner universities



Dynamic Learning Culture

On top of theoretical learning from university academia, our programmes emphasise interactive learning approach.

The teaching and learning focus on group discussion and presentation, industrial case study sharing, corporate project analysis and e-learning activities to assist students in consolidating their knowledge in the fast-changing world.

WMG has strong links with industry to draw real-world insights into the teaching. Business or industrial visits and lectures conducted by distinguished speakers from industries allow students to immerse themselves in the business environment and establish constructive relationship with the industrial experts and business professionals.

Excellence in Research and Teaching

The University of Warwick is one of the UK's leading universities with an acknowledged reputation for excellence in research and teaching, for innovation and for links with business and industry. To ensure high-quality teaching, most of the modules of this programme are taught by the professional academia of the University of Warwick, UK.

Distinguished Guest Speakers



Student Sharing

“The Programme and Project Management of Warwick is impressive and competitive programme with supportive staff and tutors. I met many hardworking and friendly students. VTC provides good study and learning environment. Students became motivated because of all the above. I strongly recommend the program as it enriches my life and experience which also increase my confidence.”



**Lee Chi Leung,
Leonard**
Director,
Airlck Engineering Ltd.

Career Prospects

The professional knowledge students gained through these two programmes should strengthen their confidence to deal with the challenges they are going to face. Students are also provided with many tools which they could use in their career. Graduates can expect to be employed in the service industries, information technology, engineering or any other business areas requiring management professionals.

Campus Life

WMG School for Professional Development is located at VTC Chai Wan campus. Students can access all student support services and recreational facilities available on campus.



Learning and Teaching Facilities

- Learning Resources Centre (LRC)
- Warwick e-library
- Executive classroom
- Study room
- Computing facilities including internet and wireless LAN
- Language learning centre with multi-media facilities

Sports Facilities

- Swimming pool
- Badminton, table-tennis, squash, volleyball and basketball facilities
- Physical fitness room

Career and Counselling Services

- Career advisory centre
- Student counselling service
- Web-based recruitment service

Other Student Services

- Canteens and open area café
- Shuttle bus service

Submit the following documents to the Admissions Office by hand or by mail:

1. One original application form
2. One copy of academic transcripts, and / or official proof for professional qualifications
3. Two reference letters / reference forms (from academic and / or workplace professional)
4. One copy of an English Language certificate i.e. IELTS or TOEFL or Pearson Test official score report (where applicable)
5. One copy of HKID Card / Passport
6. One original receipt of application fee (HK\$200) payment

Scholarships and Financial Assistance

Full Tuition Fee Scholarship

Applicants from local or overseas universities who have obtained first-class honors degrees, or who have accomplished recognised outstanding achievements in their career or professional development may apply for the scholarship.

Entrance Scholarship*

The graduates with second class honours degrees or above will receive scholarships between HK\$10,000 to HK\$30,000.

**Apply to VTC higher diploma graduates and SHAPE top-up degree graduates who successfully complete the full-time MSc programme (AY2013/14) within the 12-month registration period.*

Bright Future Charitable Foundation Scholarship*

Successful applicants of the Postgraduate Award in International Technology Management who are student members of Hong Kong Institute of Patent Attorneys Limited may apply.

**Apply to graduate from an undergraduate degree programme within three years from the date of application.*

Extended Non-Means Tested Loan Scheme (ENLS)

Students are eligible to apply for the ENLS loans offered by the Government's Student Financial Assistance Agency (SFAA).

English Proficiency Test Examination Fee Reimbursement*

Students may apply for examination fee reimbursement for IELTS or TOEFL or Pearson Test (either one).

**Apply to VTC higher diploma graduates and SHAPE top-up degree graduates who successfully admitted to the full-time MSc programme (AY2013/14).*

Admission

Fees for AY2012/13 (For reference only)

Programme	Application Fee	Registration Fee	Tuition Fee*
MSc	HK\$200	HK\$2,000	HK\$108,000
PgC	HK\$200	HK\$2,000	HK\$60,000
PgA	HK\$200	HK\$2,000	HK\$30,000

** The Tuition Fee for each module in AY2012/13 is HK\$10,000 and project is HK\$18,000. The amount paid for each instalment will depend on the no. of module / project taken in the semester.*

Remarks: The above listed tuition fee is for AY2012/13. It is for reference only. The confirmed tuition fee for AY2013/14 will be announced at the website.

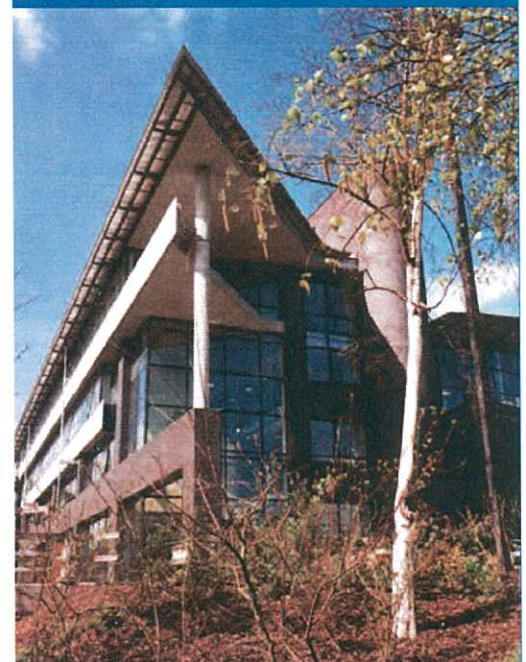
Entry Requirements

1. Bachelor degree with second class honours or equivalent and
2. IELTS 6.5 or TOEFL 92 (Internet-based) or Pearson Test 62*

**The above English proficiency requirement applies to non-native English speakers only. Applicants with at least 2 years of study in English speaking countries, such as UK, USA and Australia, etc. OR being employed and working effectively for 2 or more years in a company in which English is the working language may apply for exemption.*

Applicants with post-experience diploma or higher diploma with appropriate working experience will be considered on individual merit.

It is a matter of discretion for individual employers to recognise any qualification to which these courses may lead.



"In barely 40 years Warwick has established itself as a leading alternative to Oxford and Cambridge. It recruits some of the brightest students who are taught by staff often working at the cutting edge of technology"

For more information:

- W** www.vtc.edu.hk/wmg
- F** www.facebook.com/wmgvtc
- E** wmg enquiry@vtc.edu.hk
- P** (852) 2595 2718 / (852) 2595 8356
- A** WMG School for Professional Development, Room 008, G/F, Academic Block, 30 Shing Tai Road, Chai Wan, Hong Kong

Disclaimer

Whilst every care has been taken to ensure the accuracy of the information provided in this pamphlet at the time of publication, the School cannot be held responsible for any errors or omissions.

The School reserves the right to make variations to the contents of the pamphlet and to change or withdraw programmes described herein.

This pamphlet is for reference only and does not constitute any contractual obligation on the part of the School.

Published in Feb 2013